

Mac Basics

For Everyone!

March 18, 2014



Mac Help

Tom Miller

tdmill@me.com

325-518-6662

Purpose Of The Class

How to use the Mac!

Please, Please don't be afraid of an update!

**To See All the
Slides in this
Presentation....Go to:**

tommillermachelp.com

look to the right to see recent posts and go to March 18, 2014

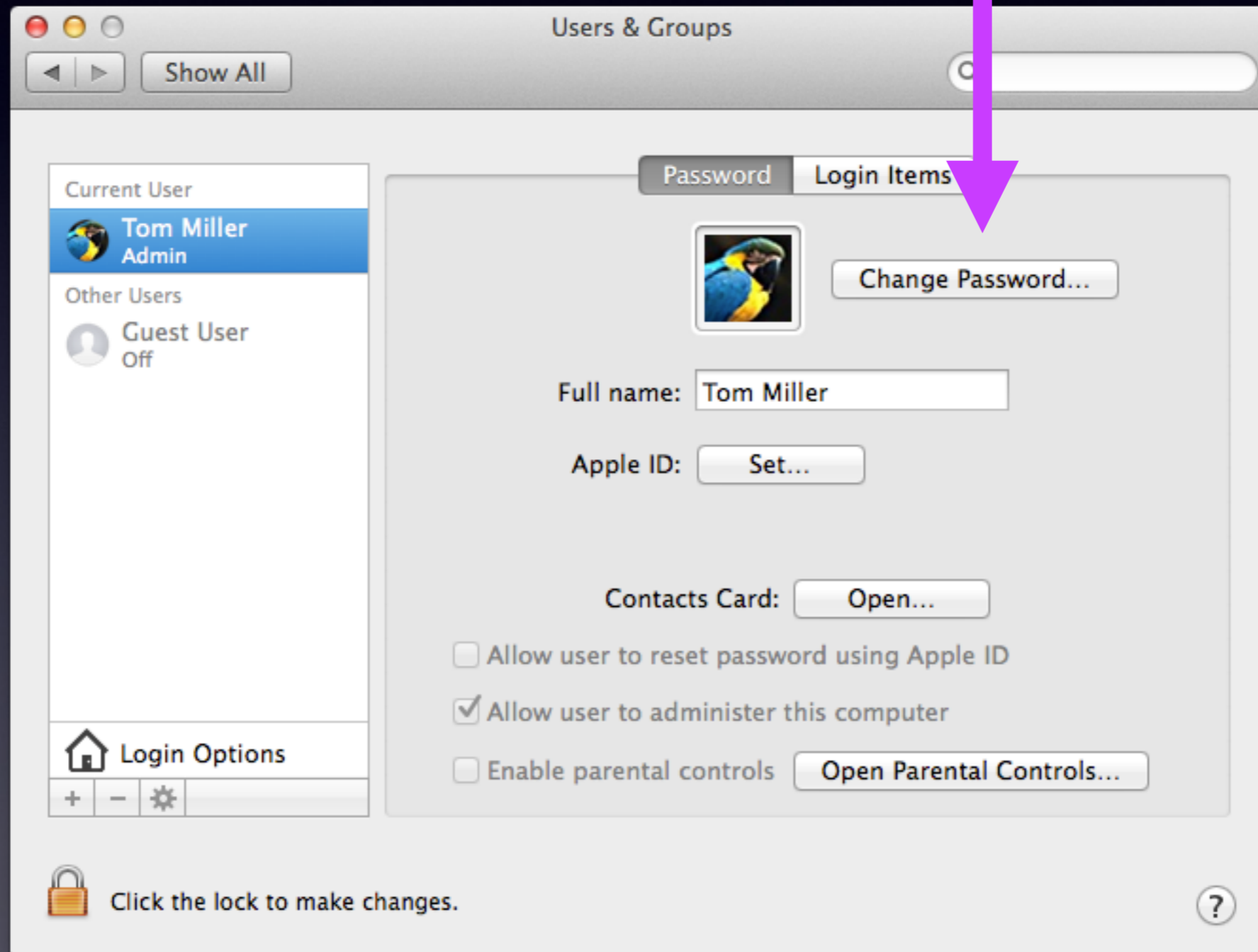
**Our presentation
is not
about any one
specific app*!**

***As the “presenter”**

**There are some difficulties in knowing
what is of importance and interest!**

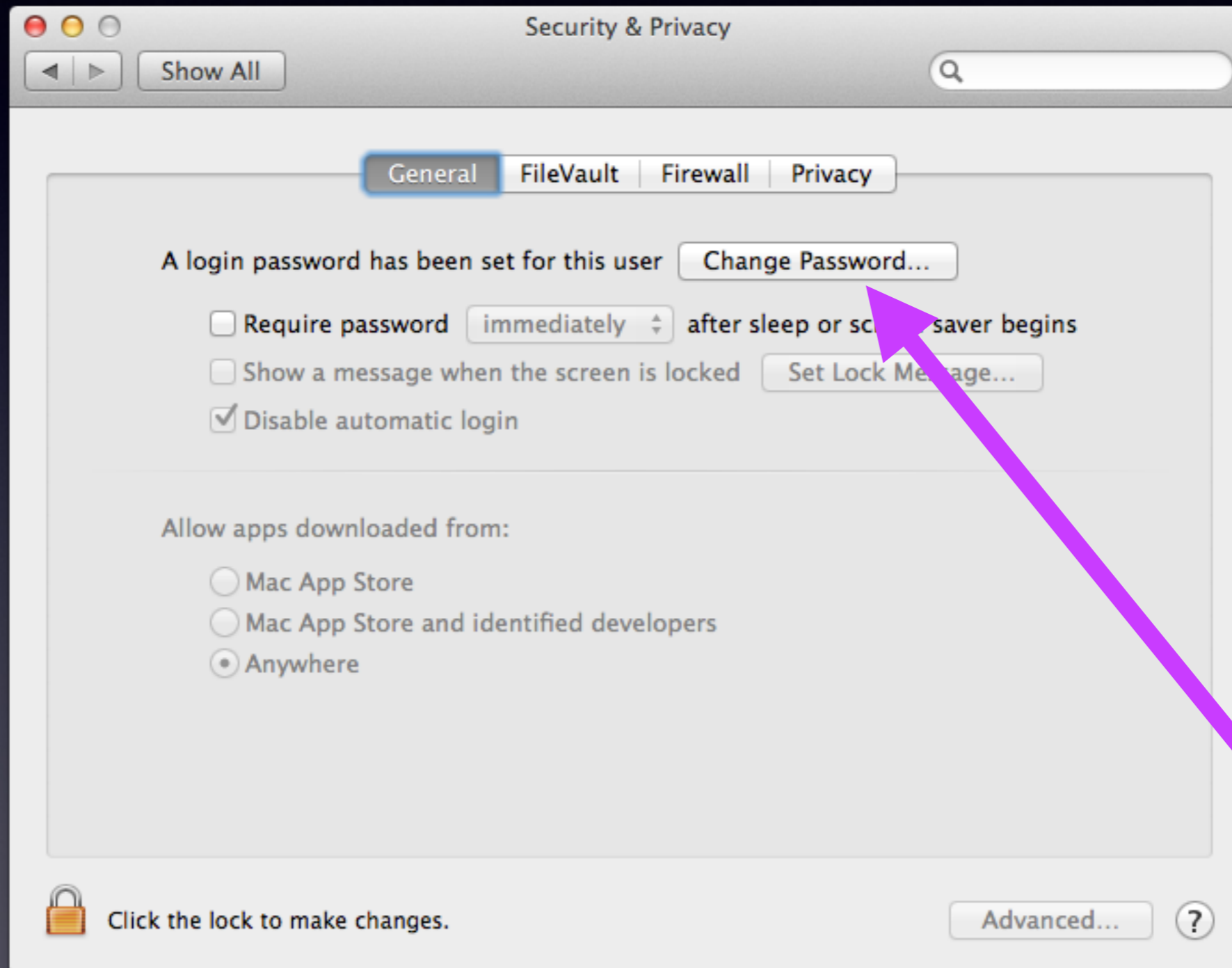
Computer Password

Is it worth locking your computer...
with a password?

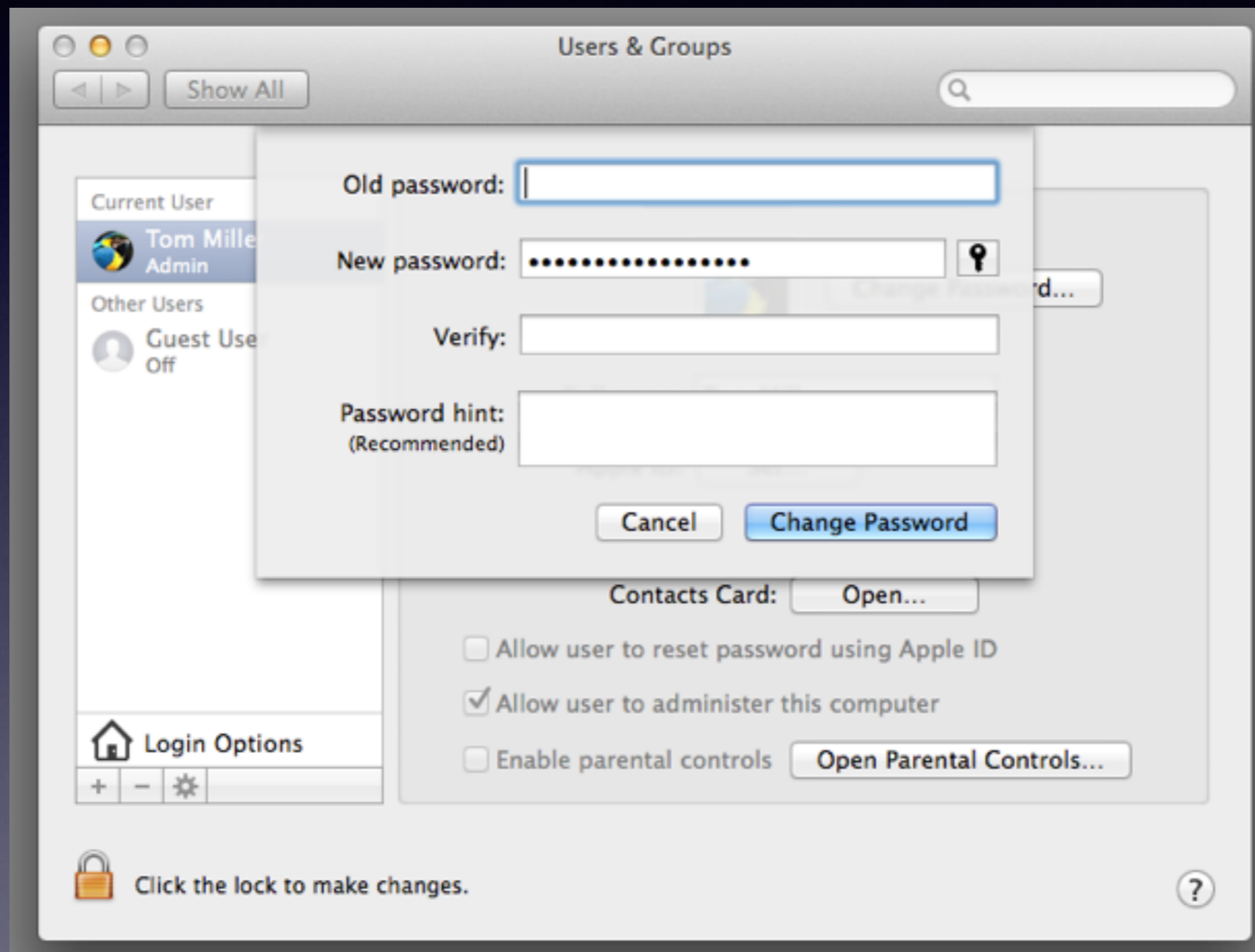


Computer Password

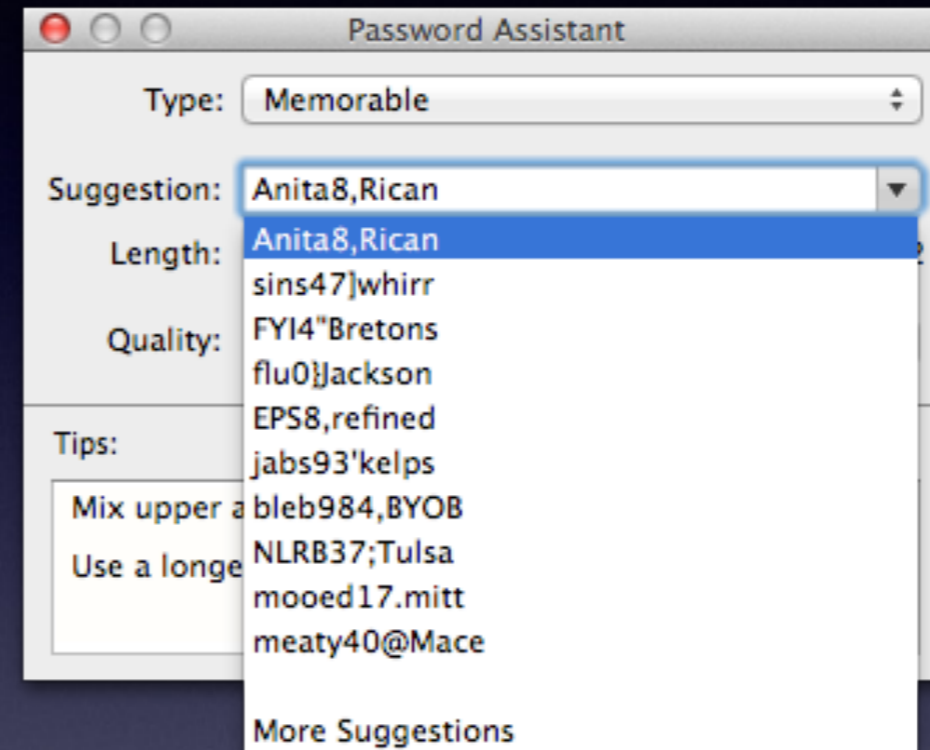
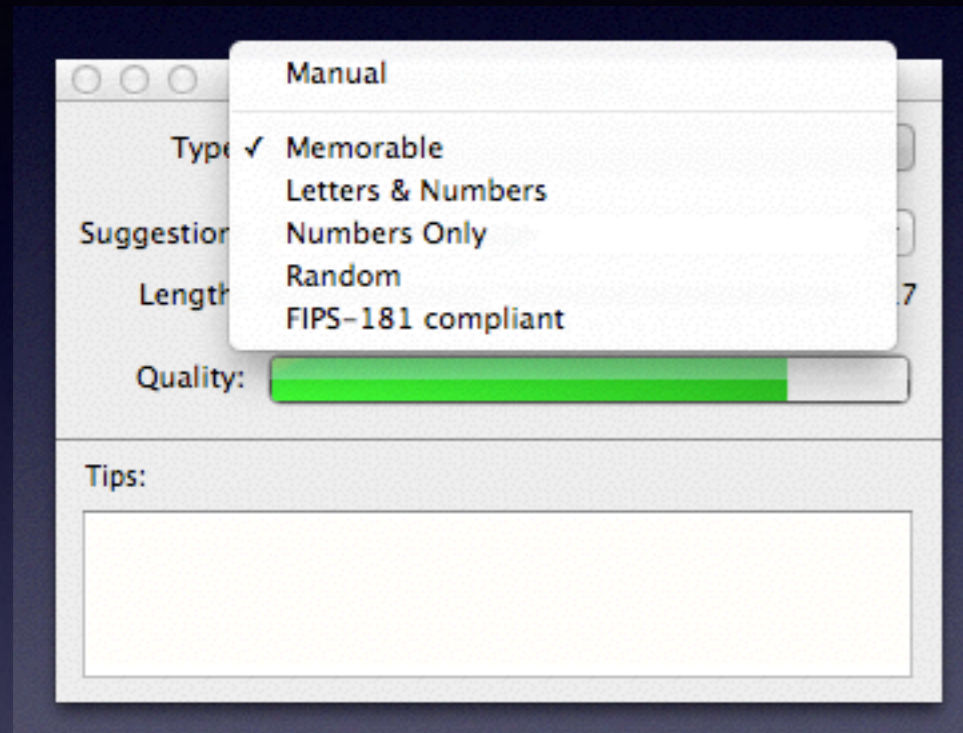
Is it worth locking your computer...
with a password?



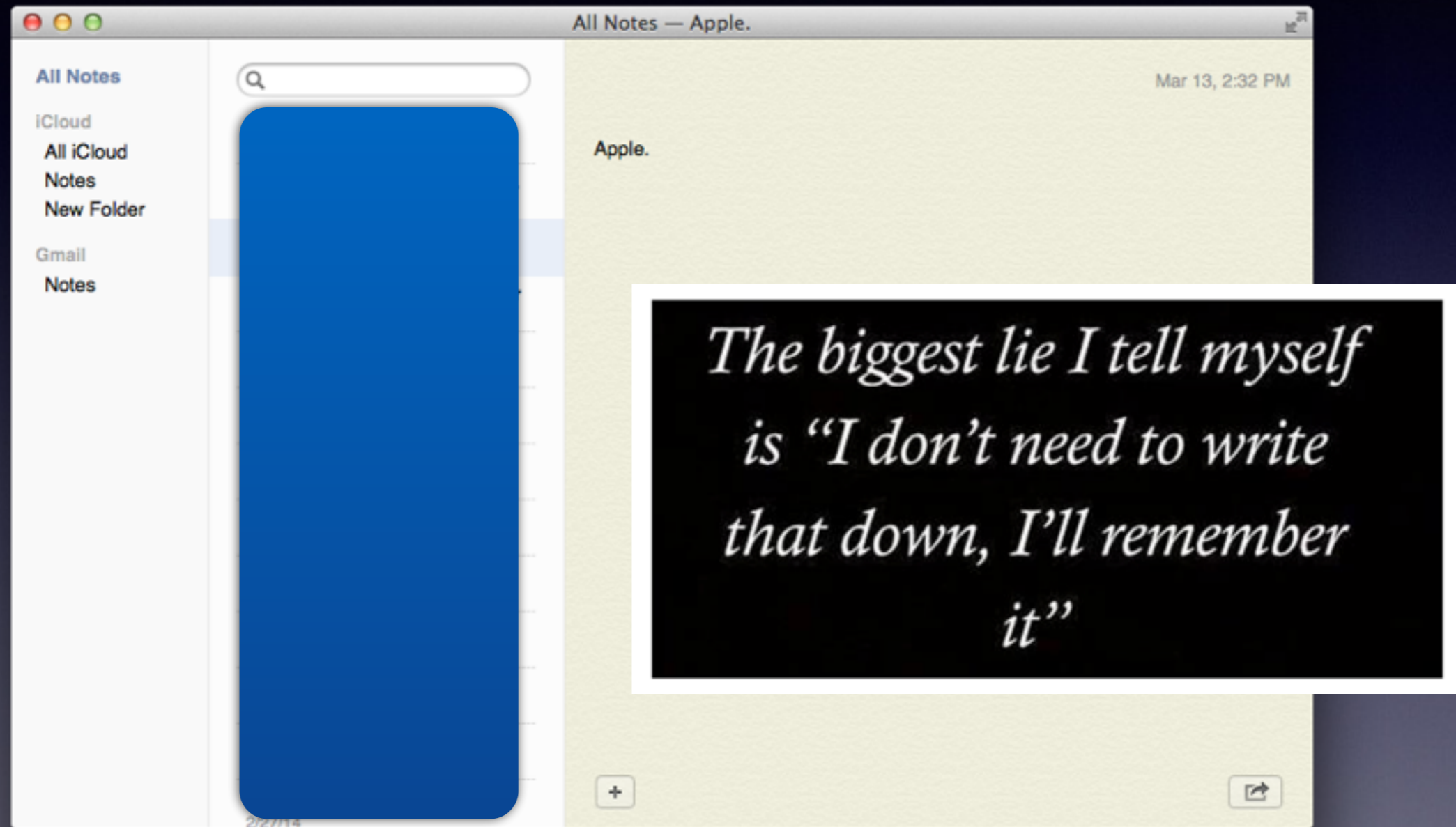
Computer Password



Password Cont.



Use the Notes App



Password on iPhone / iPad

March 13th, 2014, 09:15 GMT · By [Filip Truta](#)

iOS 7.1 Updates In-App Purchase Prompts with New Warning Sign

Remove iPhoto Duplicates

macpaw.com/iPhoto_Cleanup

Unique utility to slim down iPhoto. Save tons of disk space on your Mac



SHARE:

 +1  0

 Like  0

 Tweet  3

 Pin it

Adjust text size:  

In-App Purchase Complete

You can now make additional purchases in any app for the next 15 minutes without reentering your password. To change this, tap Settings and go to Restrictions.

Settings

OK

Shut Down and Restart

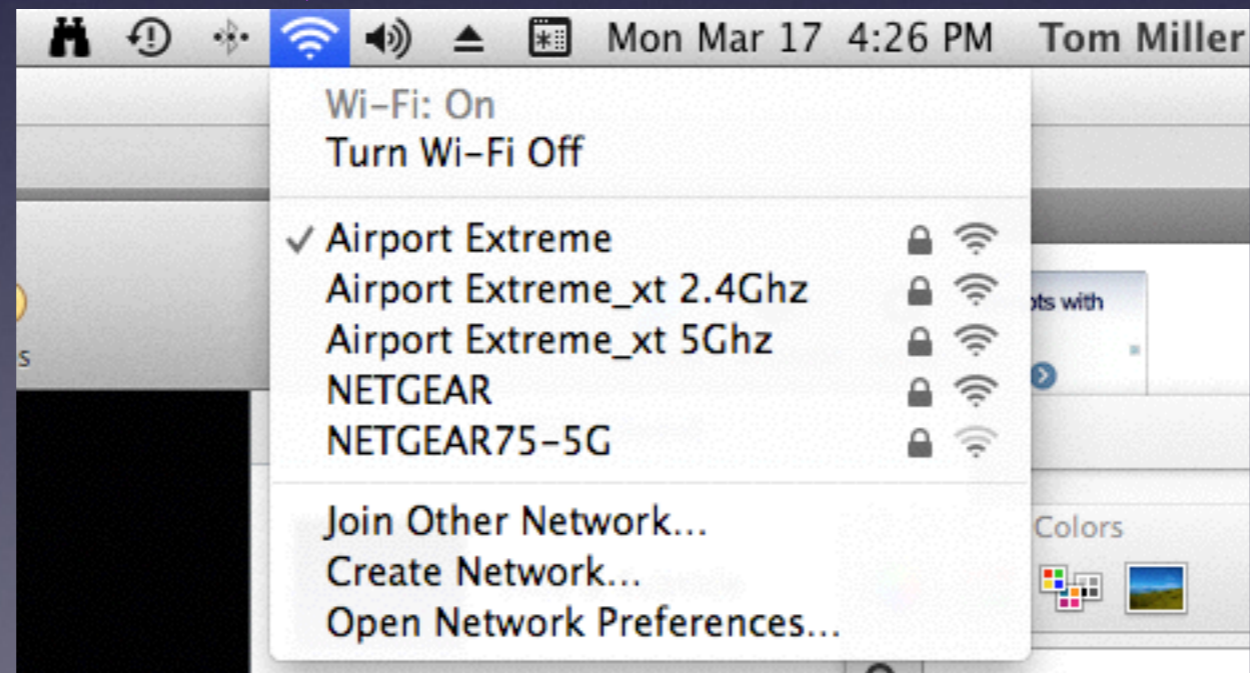
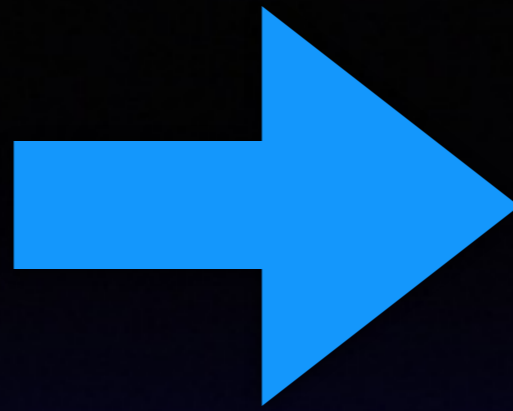
What should you do ?

1. Check to reopen
2. Do not check to reopen

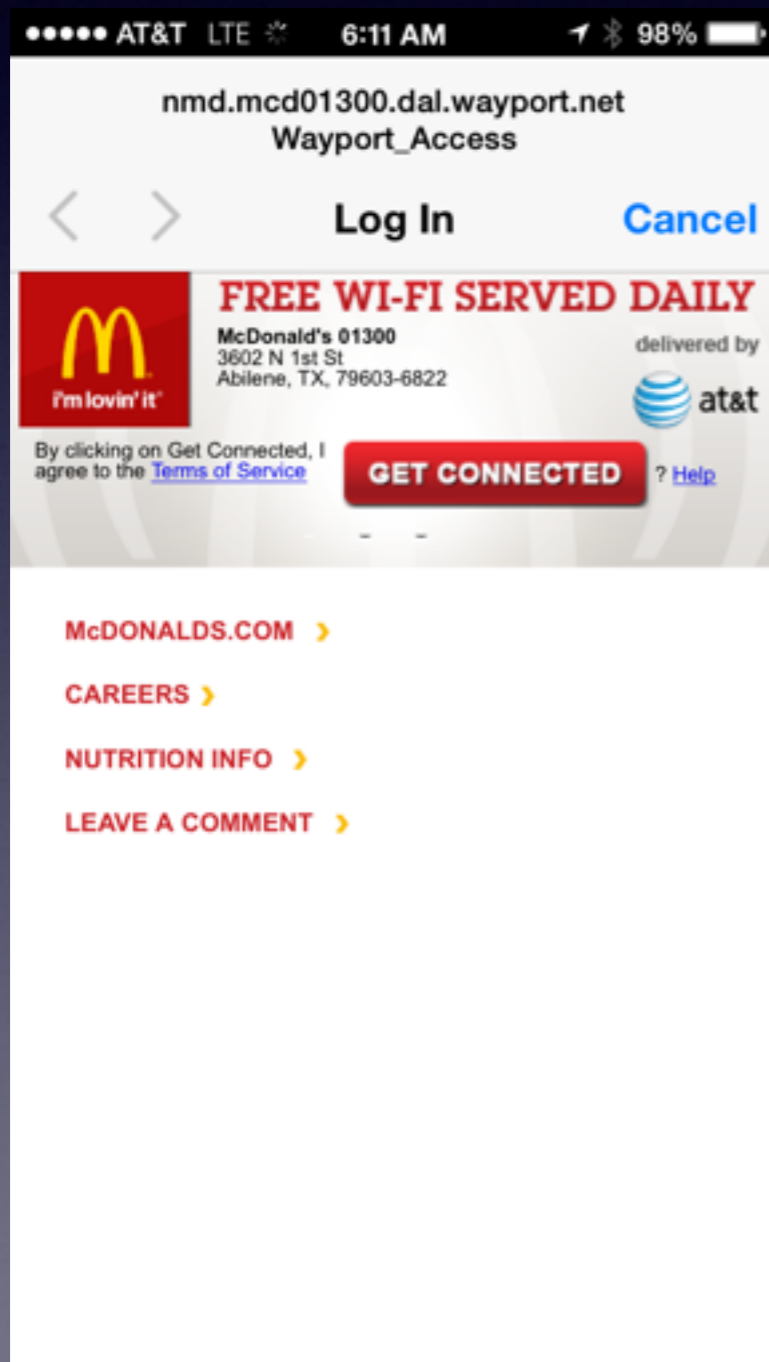


If you have an issue with an App... you may reopen the issue!

What is



What is a Public Wi-Fi Network?

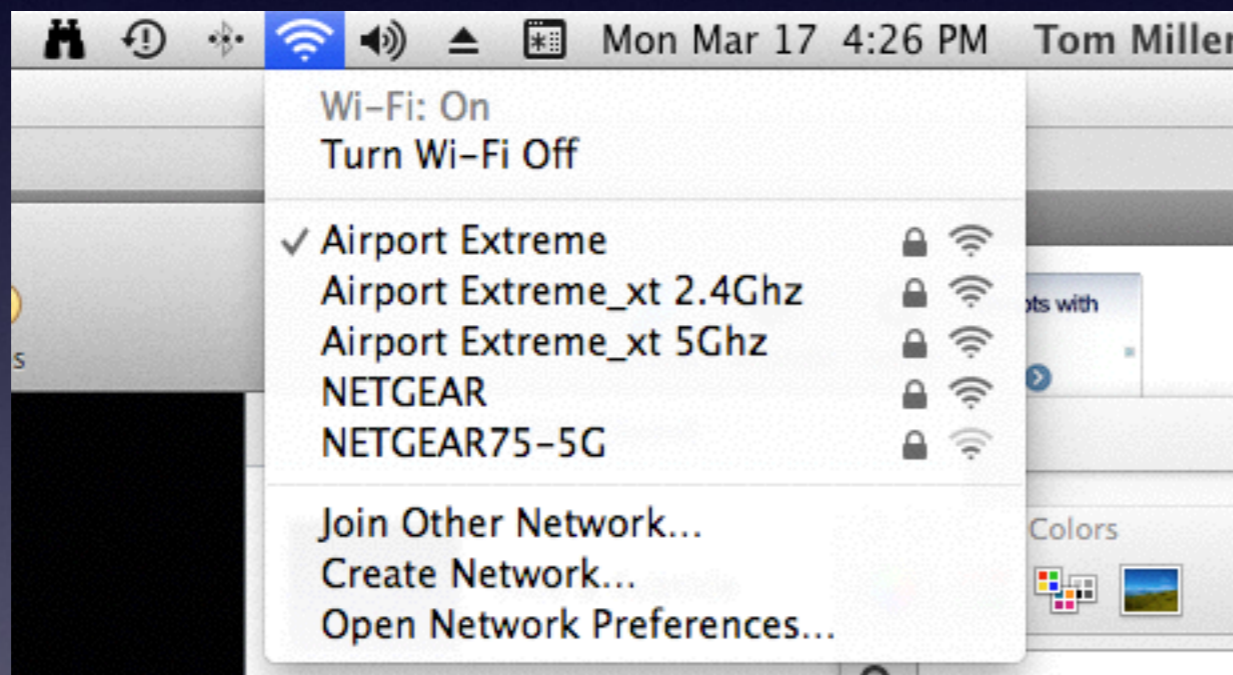


Generally,
it is **free**.

There are
terms of service.

You are
sharing the
Network!

Why Should I Lock my Router [Network]?



Do You Have to type a passcode at McDonalds?

Why Lock my Router?

People Can Hack into my Computer and steal my Data!

People Can Hack into my Computer and steal my allotted data.

Bandwidth vs. Usage

The screenshot shows the Suddenlink website interface. At the top, there is a search bar with the text "Enhanced by Google" and a search button. Below the search bar is a navigation menu with links for "suddenlink2GO", "News", "Games", "Music", "Sports", "Local", "TV Listings", "More", "My Account", "Email (5)", and "Log Out". A secondary navigation bar includes "Overview", "My Profile", "My Bill", "My Services", "My Email", "Online Tools", and "Refer-A-Friend". The main content area is titled "My Services" and contains a list of services: Television, Internet, Phone, and Security. A purple arrow points to the "Internet Usage" link under the Internet service. To the right of the services list are sections for "Notifications", "Need help?", and "Quick links".

Service Category	Service Name	Status	Additional Info
Television	TV Lineup Suddenlink2GO	Active	The best TV experience. Period
Internet	Internet Usage	Active	Say goodbye to slow.
Phone	Call Details International Rates	Active	Home phone, but way better.
Security	Service Not Active	Not Active	Connected. Protected.

Go to your account. Whom do you pay for Internet?

Bandwidth

Network Transfer [of data] rate

[What is bandwidth? - Definition from WhatIs.com](#)



[searchenterprise.wan.techtarget.com/.../bandwidth](#) ▼ TechTarget ▼

by Margaret Rouse

1) In computer networks, **bandwidth** is often used as a synonym for data transfer rate - the amount of data that can be carried from one point to another in a given ...

[Bandwidth - Network Bandwidth - Networking - About.com](#)



[compnetworking.about.com/.../bldef_bandwidth.htm](#) ▼ About.com ▼

by Bradley Mitchell

Definition: **Bandwidth** in computer networking refers to the data rate supported by a network connection or interface. One most commonly expresses **bandwidth** ...

[Bandwidth Definition - PC Support - About.com](#)



[pcsupport.about.com](#) › ... › [Glossary / Terms](#) ▼ About.com ▼

by Tim Fisher - in 7,638 Google+ circles

Bandwidth refers to the amount of information that something can handle in a given time.

Check Speed with Speed Test [Ookla]

Check How Much Data Transfer
with
Your Internet Service Provider
vs.

How Fast does data travel to you.

My Internet Usage

Internet Usage x

My Internet Usage Summary

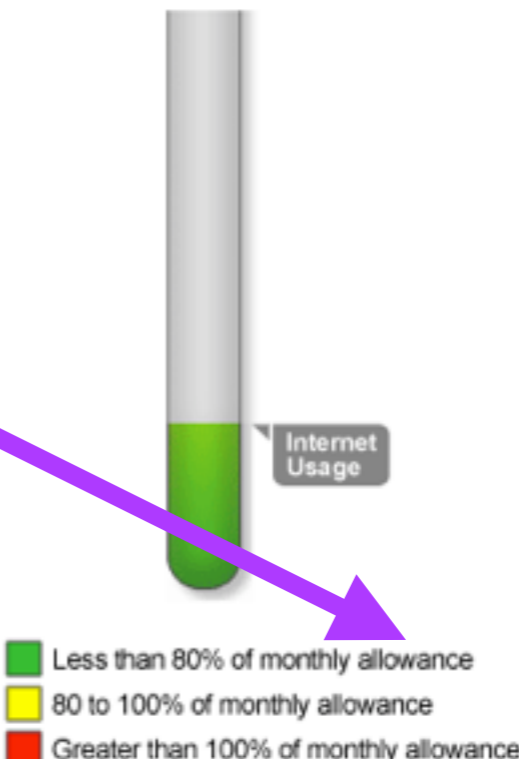
Details for Period of 02/17/2014 - 03/16/2014

Internet Usage (As of 11:59 PM local time, 03/16/2014) **64.4 Gigabytes (GB)**
Monthly Usage Allowance **250.0 GB**

More Information

- [Frequently Asked Questions](#)
- [Daily Usage Graph](#)
- [Monthly Usage Graph](#)

Notice...
Suddenlink
gives me a
monthly
allowance!




Internet Usage

- Less than 80% of monthly allowance
- 80 to 100% of monthly allowance
- Greater than 100% of monthly allowance

Our usage measuring and reporting system is designed to update the information reported on this page every 24 hours. Typically, those updates will be processed and posted to this page each day by or before 8:00 a.m. Central Time, reflecting usage through approximately 11:59 p.m. local time of the prior day. In those cases where a new update to this page shows no incremental usage in the 24 hours since the last update, one of two conditions apply: either (a) there was no incremental usage in that time period; or (b) the transmission of daily usage (from our counter to this page) was delivered too late to be deemed useful to the customer and was thus not counted and not applied to the customer's usage total.

How Much Usage for a Movie?

Internet Explorer
Applies To: [Internet Explorer](#) | [Internet Explorer 9](#) | [Windows 7](#)


 **Question** 1 Had this question Me Too

[JOHNBOSSERT](#) asked on [September 21, 2011](#)

how much bandwidth does a 2 hour movie use?

I have just watched a movie on netflix and would like to know what prportion of my allowable blandwith I have used?

[Reply](#) | [Reply with quote](#) | [Report abuse](#) | [Subscribe to Updates](#)

 **Answer** 0 Found this helpful Me Too

[Azam K](#) replied on [September 22, 2011](#)

Microsoft

Hi,
An hour and a half movie usually is about 700MB and a two hour movie about 1.8 GB if you want HD movies then it is about 3 GB for two hours, this is what Netflix says.
Hope the information helps.

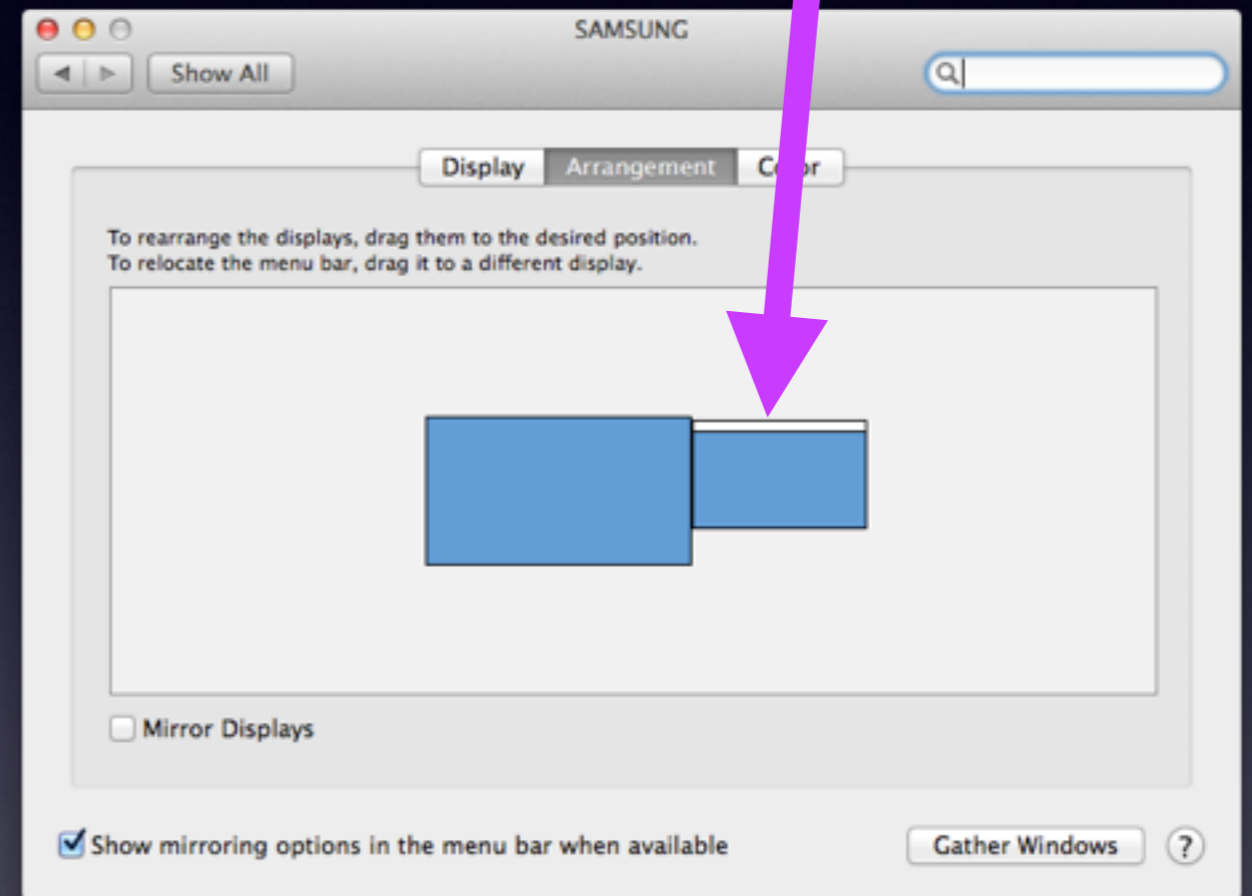
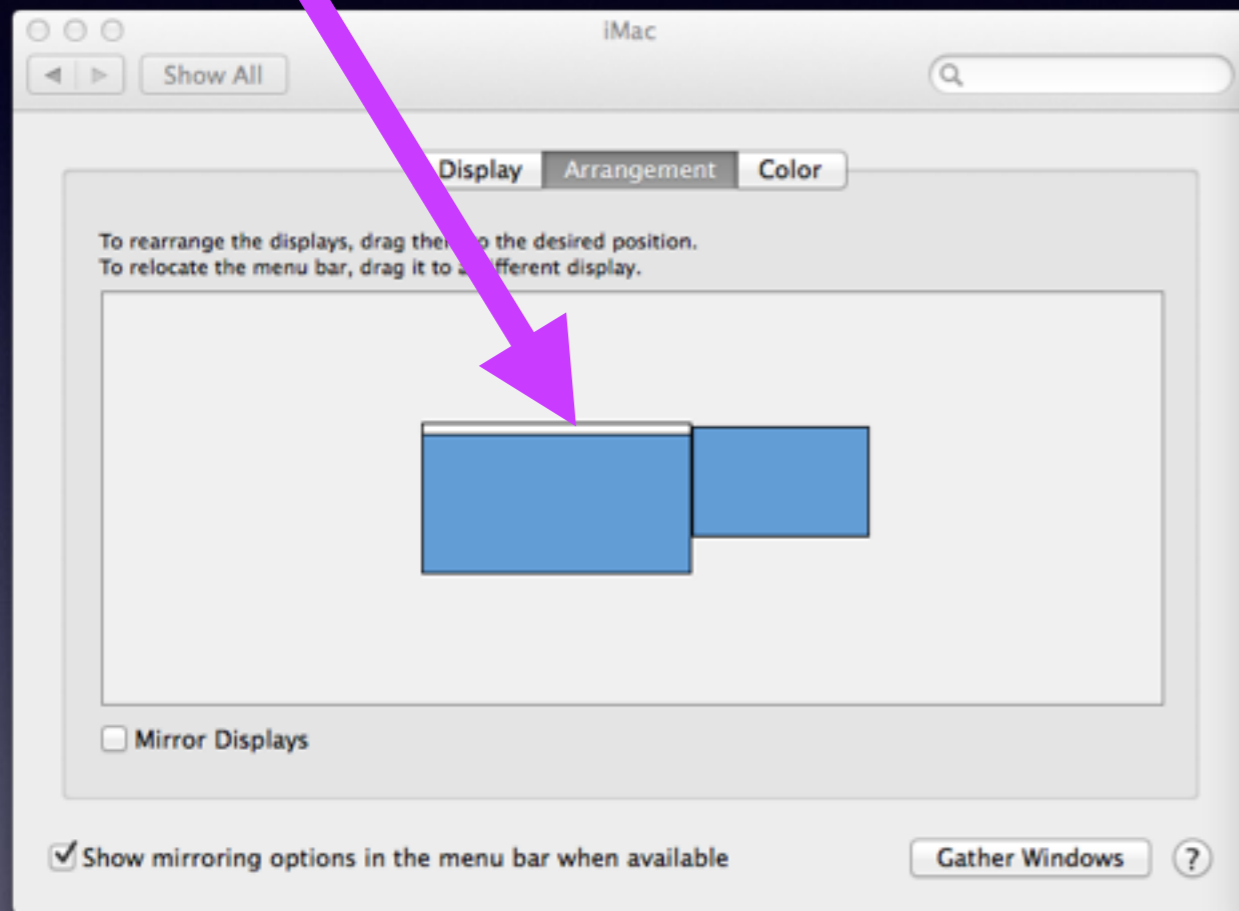
[Reply](#) | [Reply with quote](#) | [Report abuse](#)

Your plan may provide less usage!

Perform a Search on a Mac



Arranging Displays



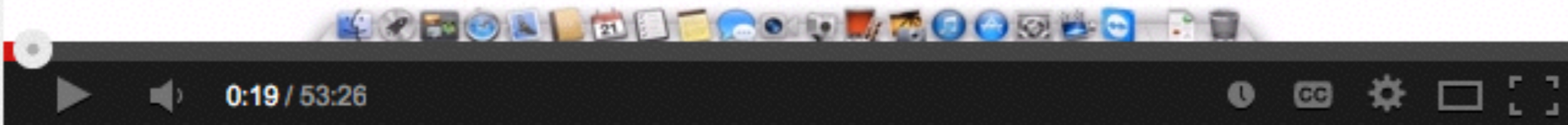
Learn the Mac

Find Him on YouTube



PC Classes
ONLINE.COM

David A. Cox's



Learn the Mac In Under An Hour



David A. Cox · 124 videos

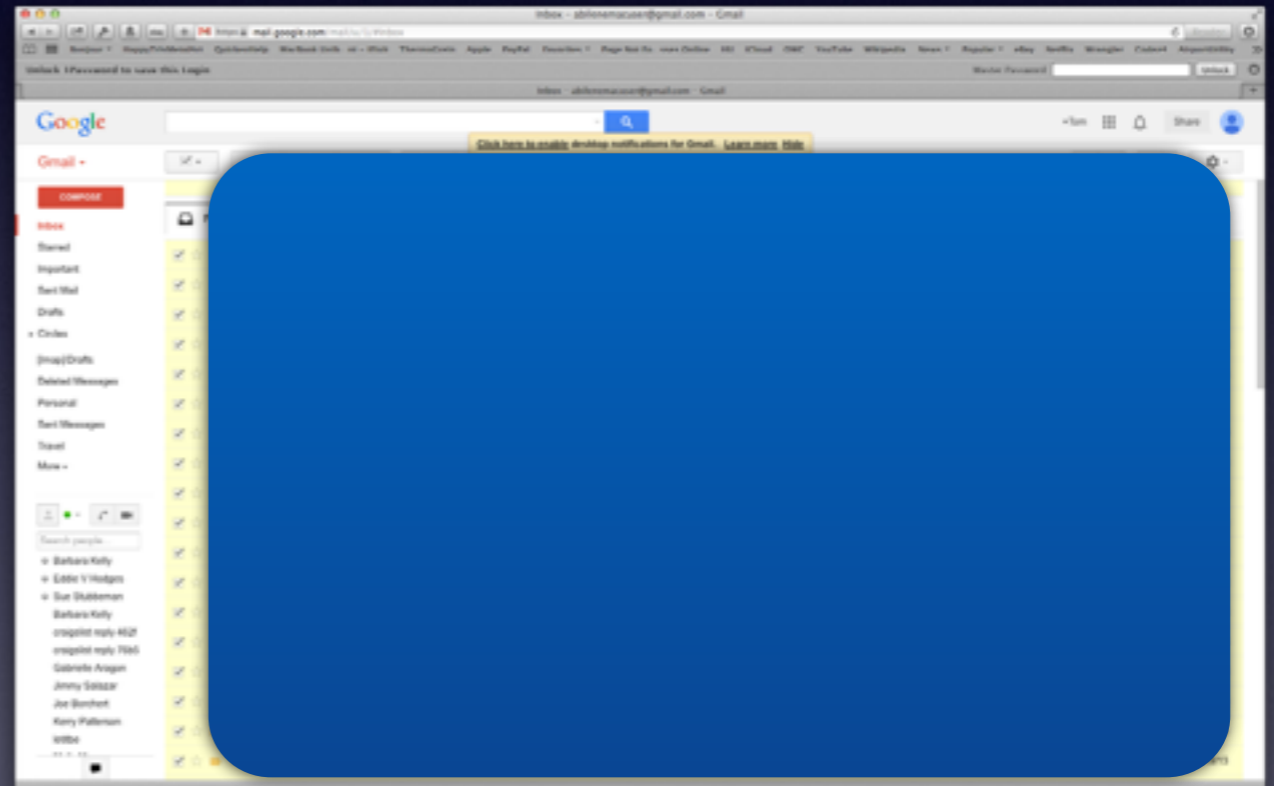
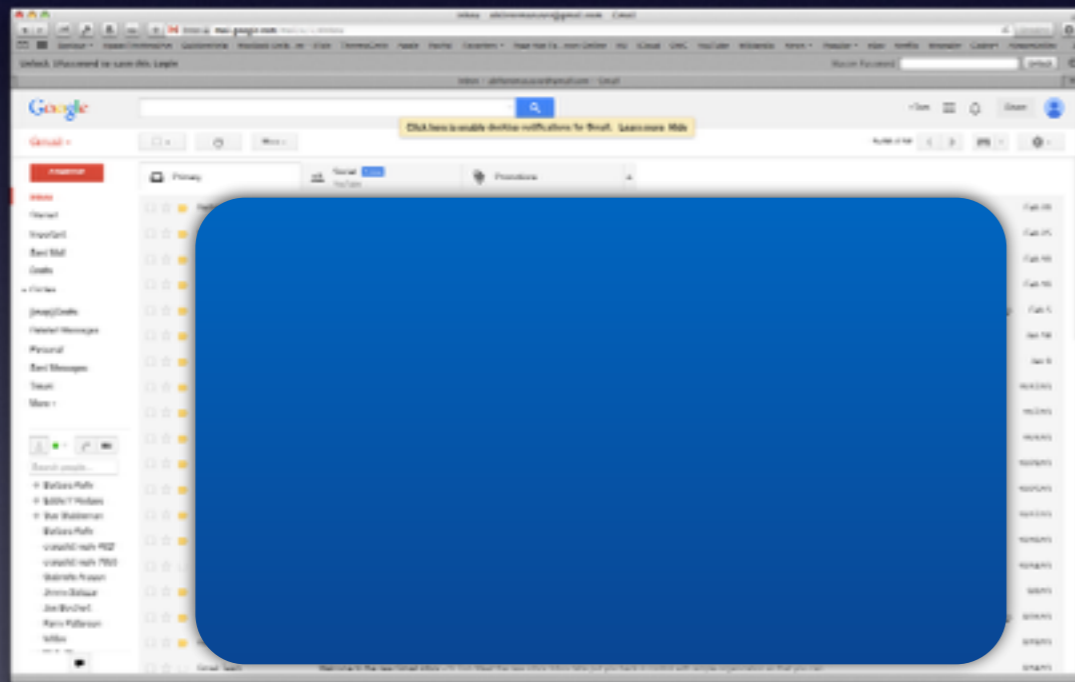
186,424



Apple Mail vs Web Mail

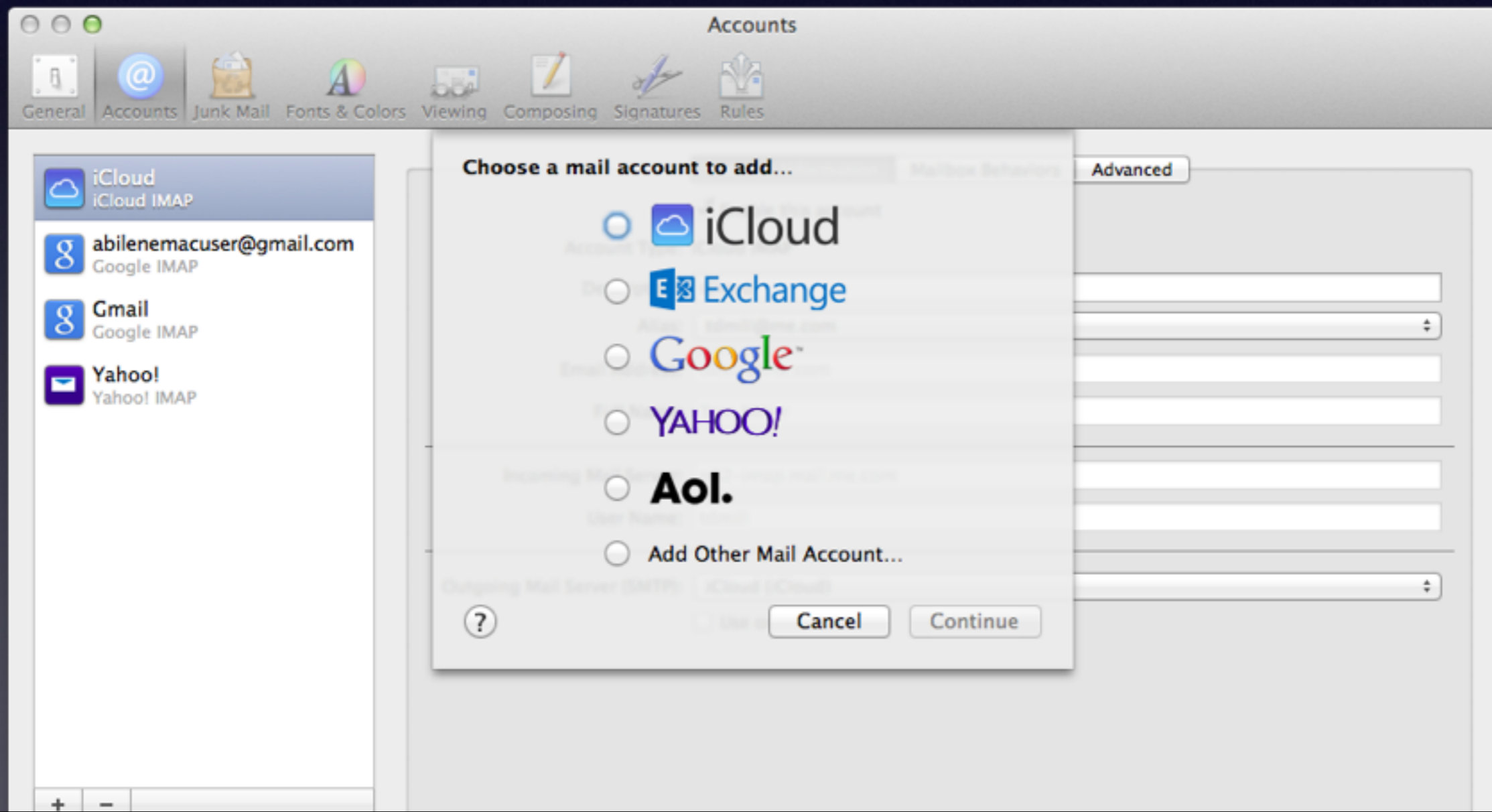
Can I delete all my email in one fell swoop?

Use Web Mail

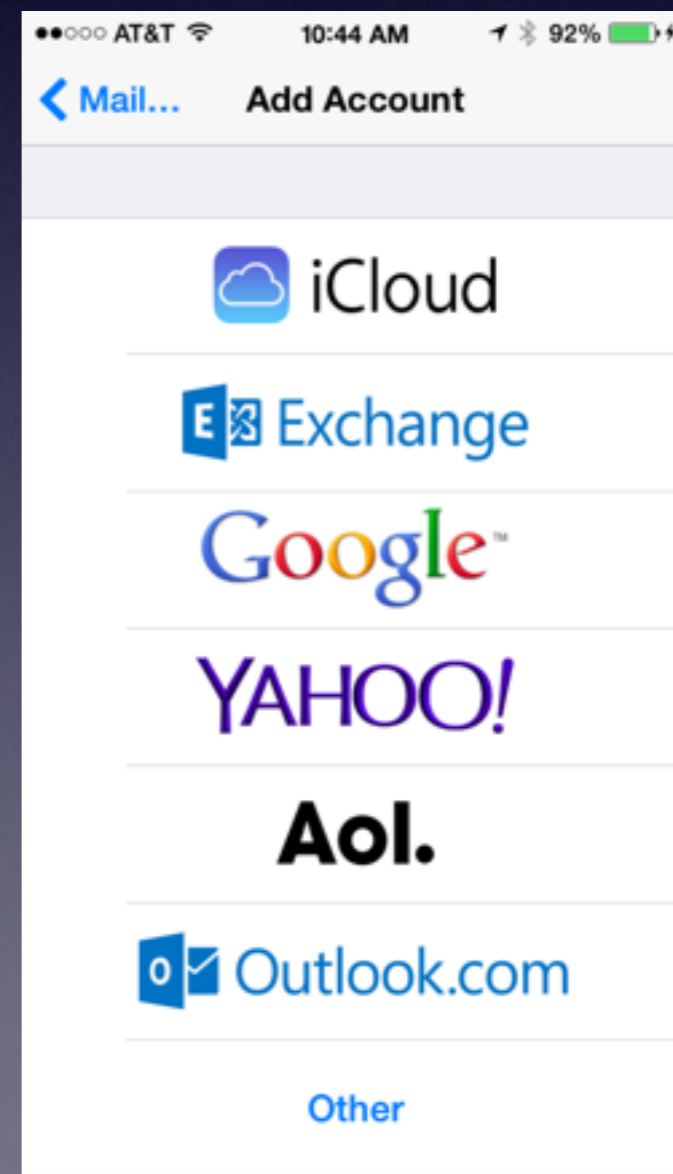
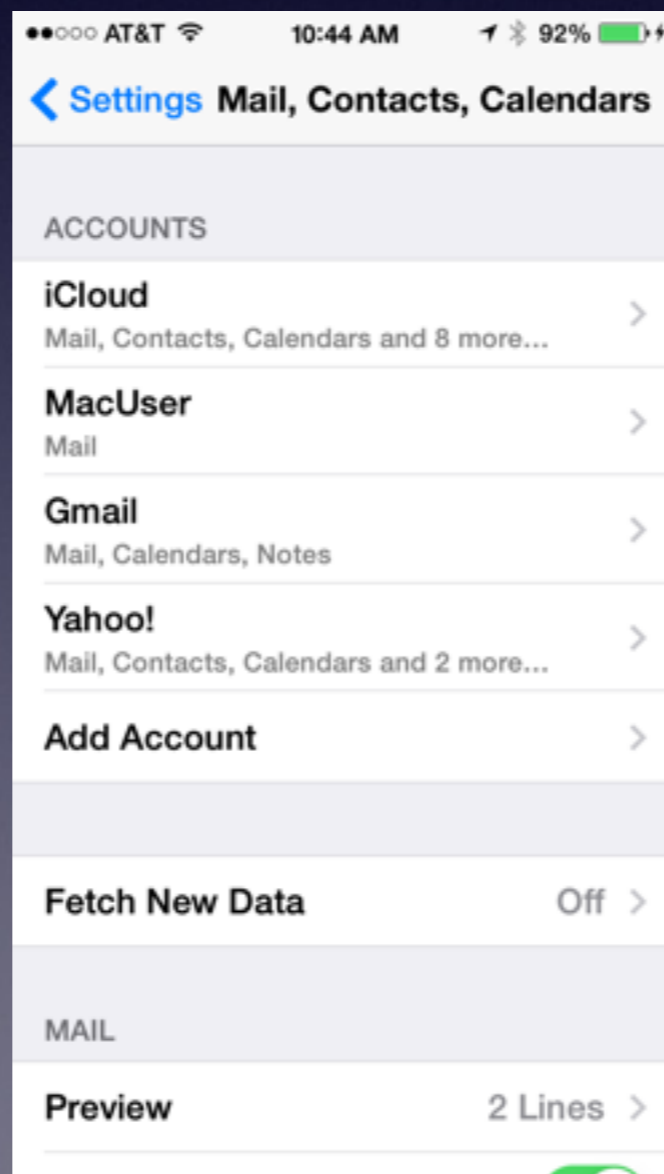
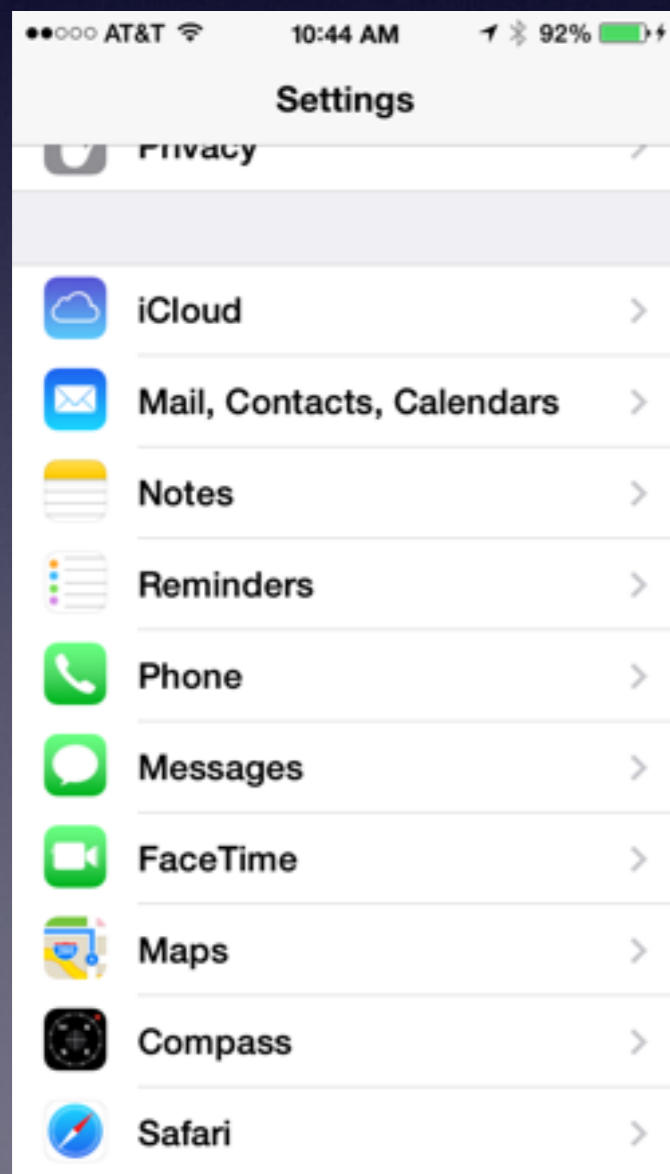


How to Add an eMail Acct.

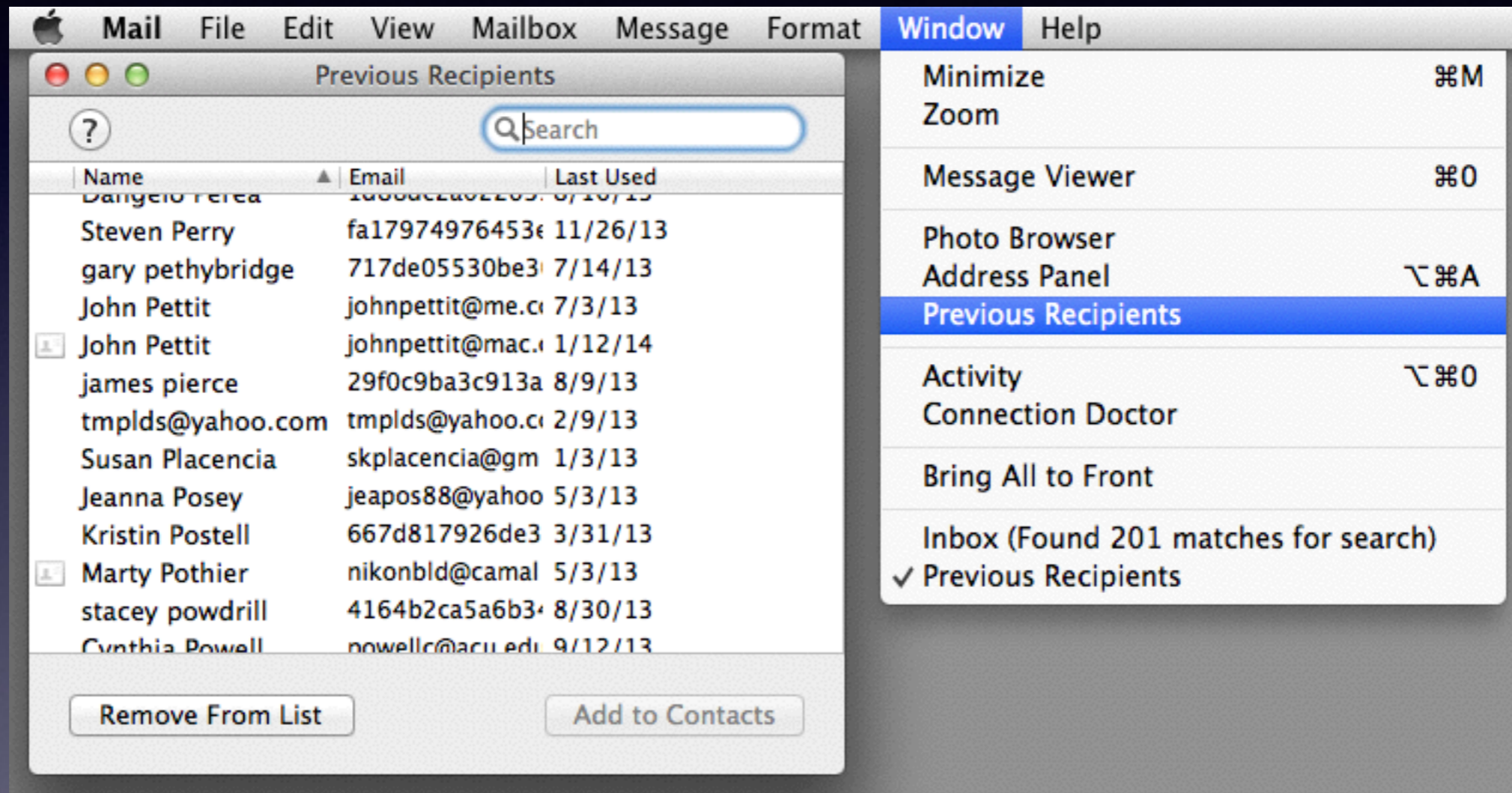
If you do not have a Gmail account;
go to my web site: tom.millermachelp.com
and search for “setting up a Gmail account.”



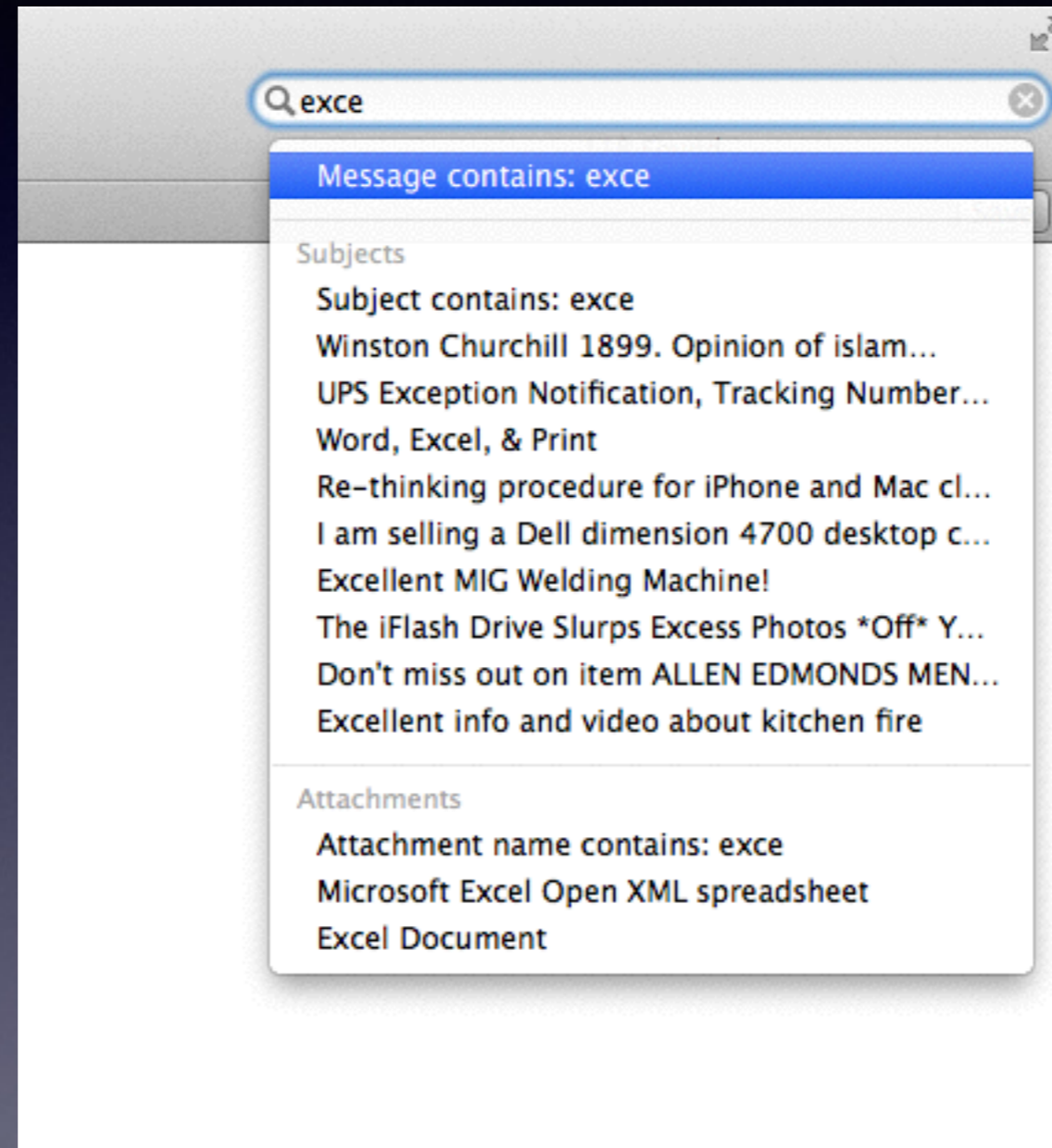
Setting up eMail Acct on an iPad or iPhone and Mac Computer



Keep Typing the wrong email address?



Search Mail by Attachment



Dock App Options



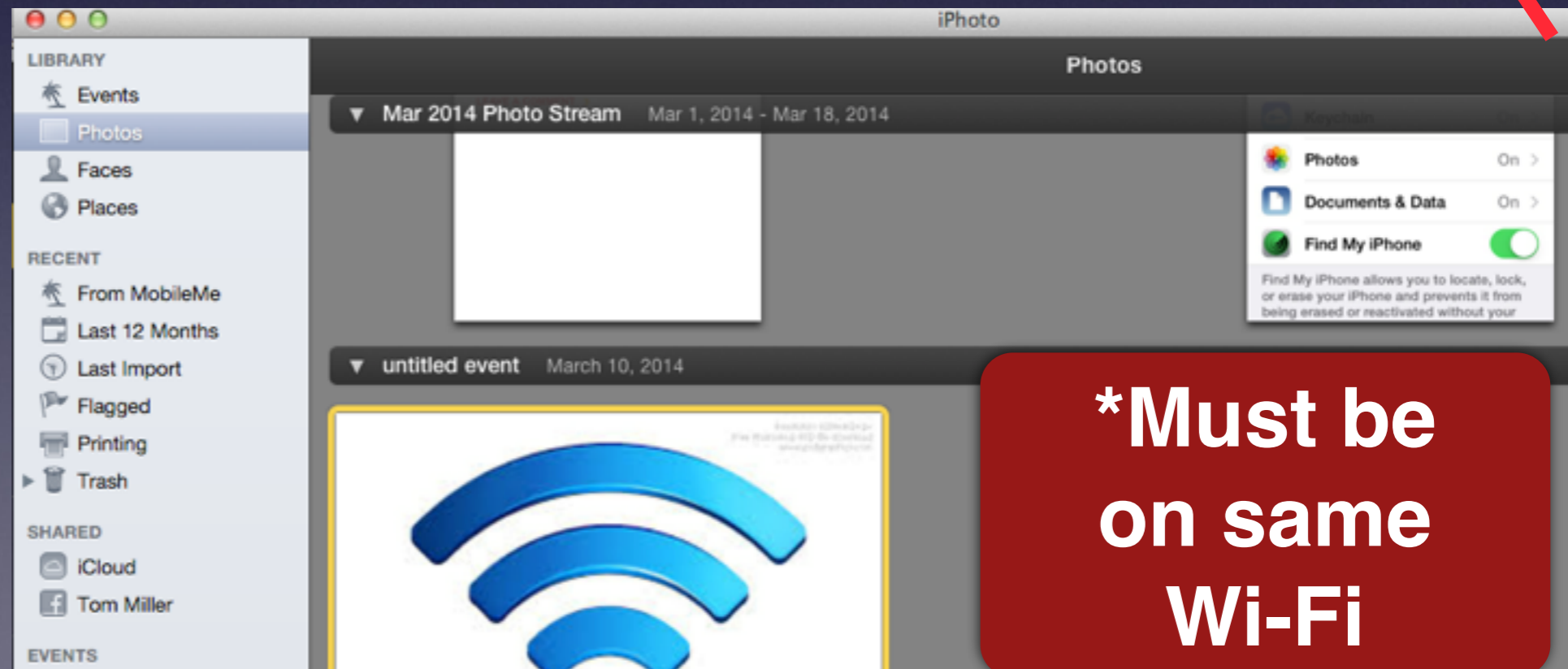
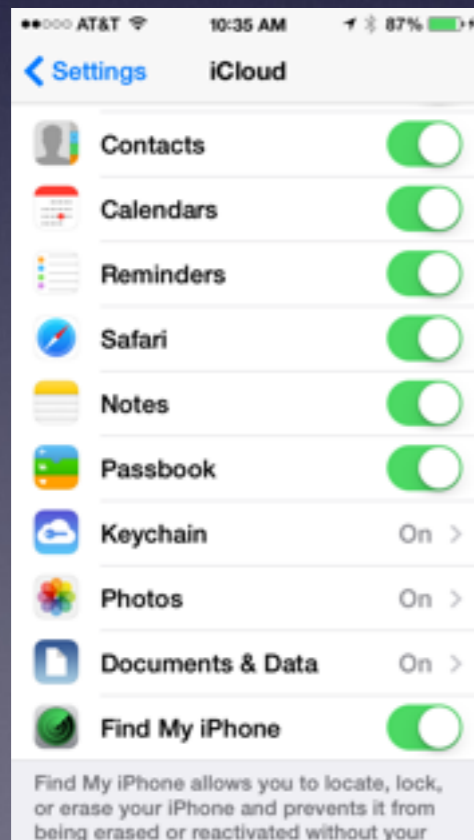
iCloud Does Not Back up Pictures

*With Photos

iCloud "Shares"

PhotoStream = Photos = iCloud

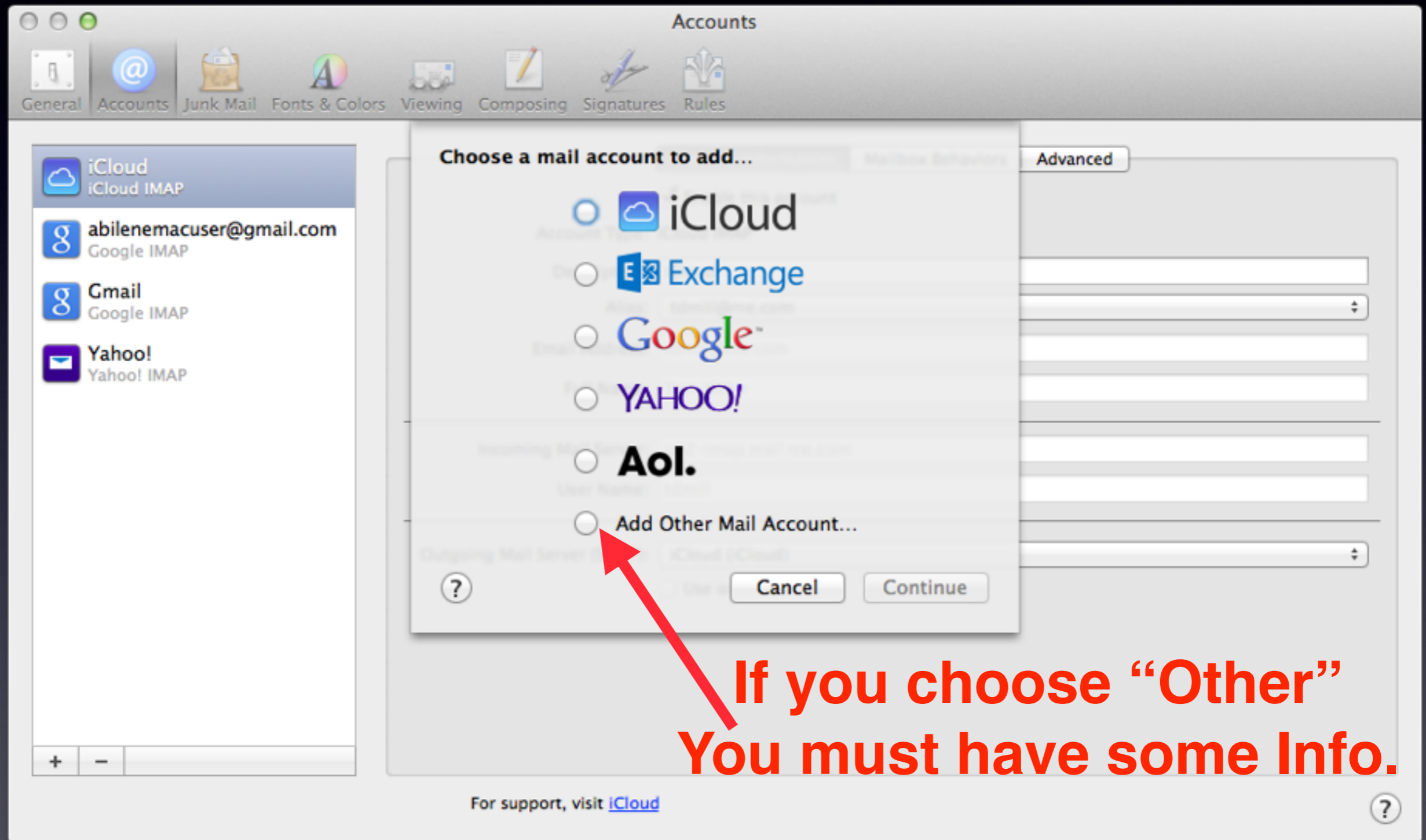
Check iCloud.com and log into your account. There is no category for photos.



***Must be on same Wi-Fi**

Mail on Mac

Open Mail, then Preferences, then Add Account



Adding a Suddenlink Account to Mail

IMAP Configuration for Email

Technical Operations Job Aid/Training Revision
Date: 7/17/13

Effective Date: **IMMEDIATELY**

Customers may choose how their email accounts are configured—whether they are set as Post Office Protocol (POP/POP3) or Internet Message Access Protocol (IMAP) accounts. In most cases, the BBT provides the information to the customer so that the customer can configure his own email account. Traditionally email accounts have been setup as POP/POP3 accounts.

With the increase in mobile devices used by our customers and the demand to check email from multiple devices from the same email server, it is recommended that email accounts be set up as Internet Message Access Protocol (IMAP) accounts. IMAP allows customers to access their emails and folders through an email client as well as webmail.

Benefit of IMAP is that the mail clients synchronize with each other allowing customers to make changes in one email client and seeing the changes on all of their email clients.



When setting up a client email account, the information listed below should be used:

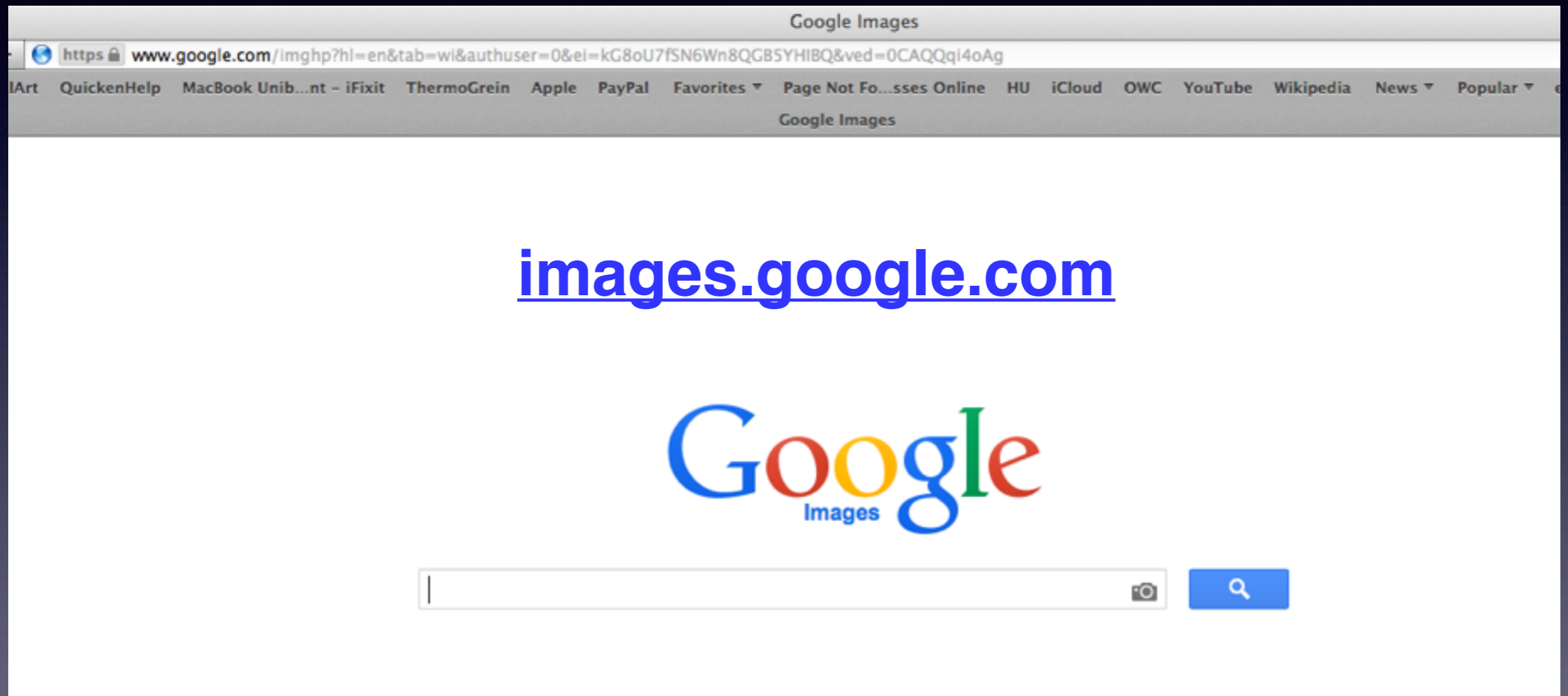
- Account Type: **IMAP**
- Incoming Mail Server: **IMAP.Suddenlink.net** Port 143
- Outgoing Mail Server: **SMTP.Suddenlink.net** Port 25



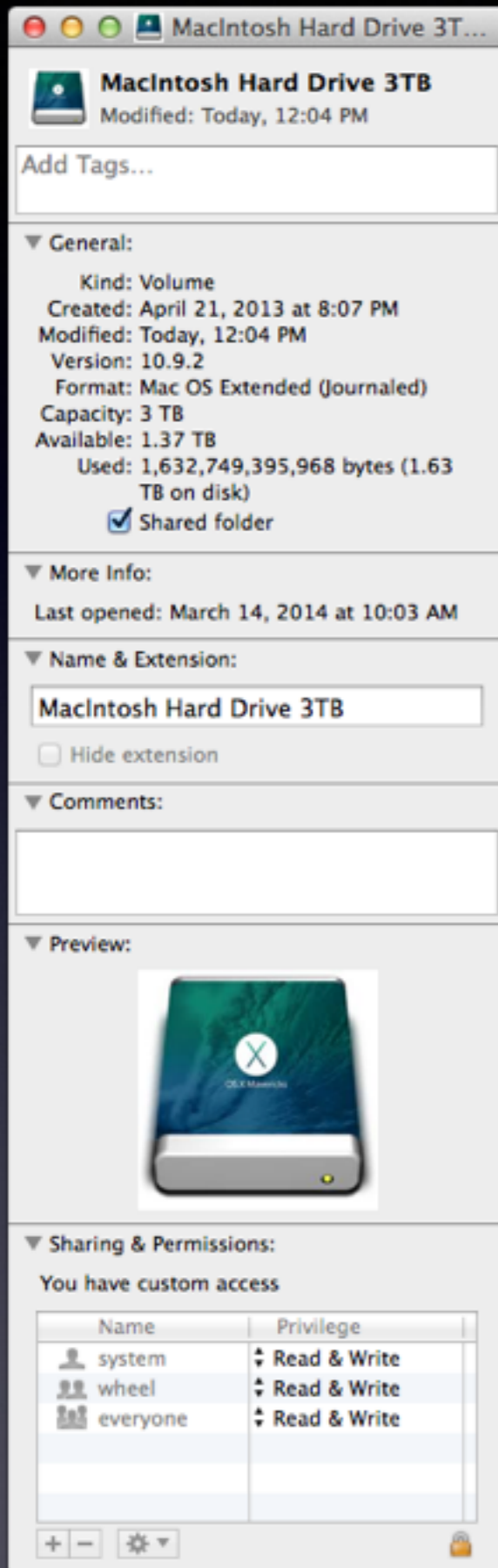
This must be setup up on each device to synchronize with the mail server.

Other Accounts listed in the previous slide can be set up automatically.

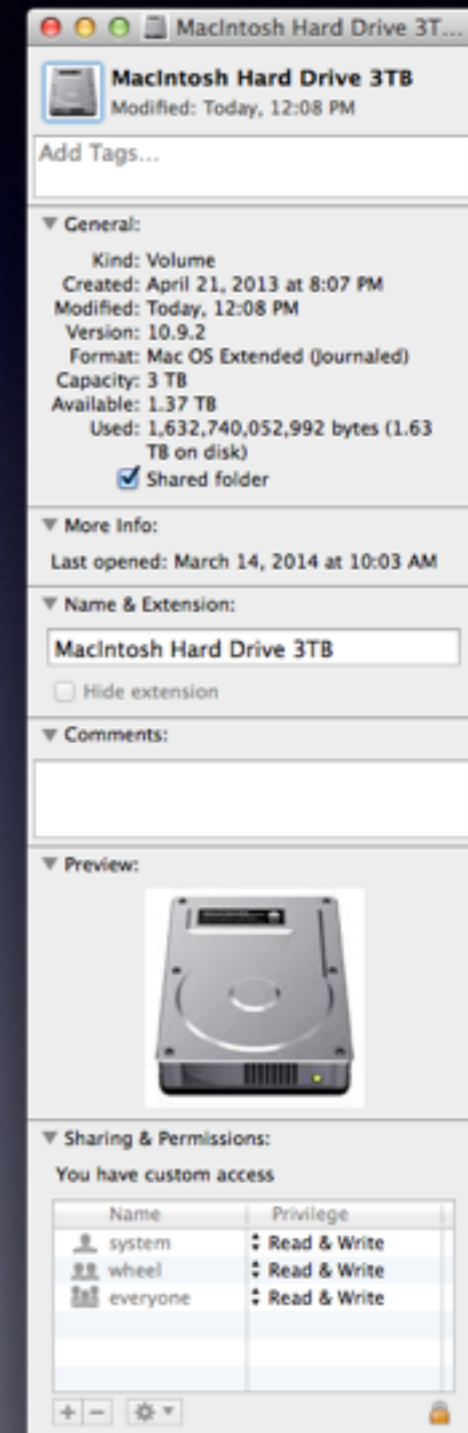
Google Images for Anything



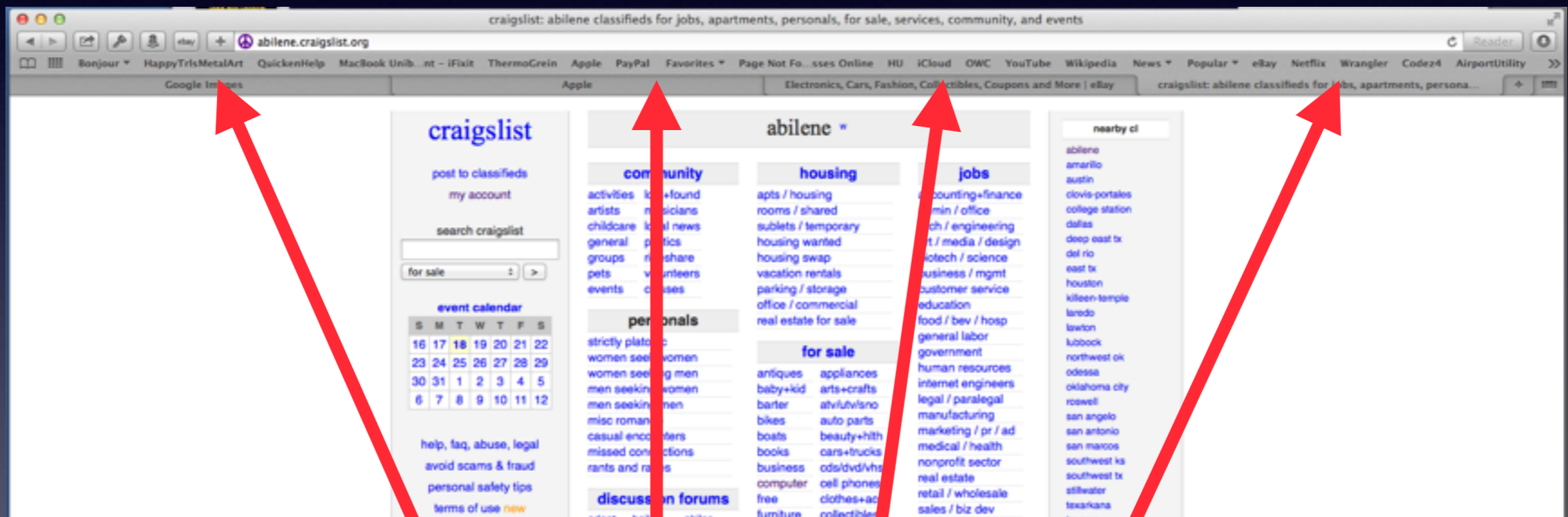
Create a Custom Icon



Go to images.google.com
Find an icon and copy image
Cmd + I
Click on top icon
Click CMD + V



Use Cmd + T with Safari



Four Separate Tabs

Repairing USB Cable



Scissors

Heat Shrink

Lighter.